

Magnetic Float Level Switches



Series: WELMAG- MSM (Magnetic Side Mounted)

GENERAL:

WELMAG-MSM series magnetic side mounted float level switches are economical & reliable snap acting magnetic level switches widely used for HIGH, LOW or INTERMEDIATE point level detection of liquids in all types of vessels.

SPECIAL FEATURES:

- Simple Design
- Operation Without External Power Supply
- Compact & Rugged Construction
- Economical & Reliable
- Due to Magnetic Coupling no scope for Leakages vessel in to switch housing
- High Temperature / Adjustable Differential Models available
- Easy for Installation



INSTALLATION:

Installation can be internally or externally by means of External Cage. External cage mounting is preferred where space is limiting factor or mechanical devices like stirrers operate within the tank. In applications like reaction kettles, boilers etc. the isolation can be achieved by using external cage. The switches are normally side mounted, but special applications top mounting installation is preferred e.g. Slurry.

SPECIFICATIONS:

TYPE	MSM-S	MSM-A
Liquid Temperature	-10 °C to +150 °C	-10 °C to +175 °C
Amb. Temperature	Max 80 °C *	Max 80 °C
Max Op. Pressure	10 Kg/cm ² *	18 Kg/cm ²
Min. Liquid Density	0.8 Kg/M ³	0.8 Kg/M ³
Switch Differential	Fixed	Adjustable
Wetted Parts	SS 316	SS 316
Housing Material	Cast Aluminium	Cast Aluminium
Ingress Protection	IP-65	IP-65
Elec. Connection	½" BSP (F)	½" BSP (F)
Switch Type	Micro Switch	Micro Switch
Switch Rating	5A/ 230 V AC	5A/ 230 V AC
Float Diameter	47mm	45mm(48mm@ weld)
Insertion Depth	225 mm	305 to 375 mm
Process Connection	92 PCD square Flange (std)+ options	Options available

*For Pressure & Temperature more than the specified rating please consult us.

ORDER CODE:

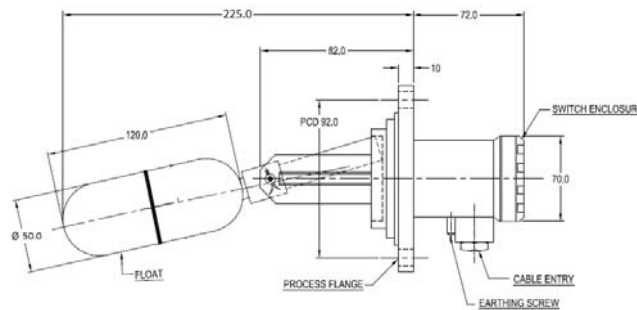
WELMAG MSM - [] - [] [] [] []

TYPE :	CODE
Standard	S
Adj. Differential	A
Extra Protrusion length* (* Length to be mentioned)	E

FLOAT :	CODE
Ø 47mm	4
Ø 50mm	5
Ø 57mm	6

PROCESS CONNECTION :	CODE
92 mm PCD, Square Flange (Standard)	9 S
2" ANSI ,150#, Flange	2 A
2" ANSI ,300#, Flange	2 B
2" ANSI ,600#, Flange	2 C
Other Flanges	O F

SWITCH OUT PUT :	CODE
1 SPDT (Standard)	1



Type: MSM-S-5

APPLICATIONS:

- Alarms for liquid storage tanks
- Used in almost all the Industries like Water/Waste Water, Power, Chemical, Pharmaceutical, Marine, Petro-Chemical etc.
- Very useful in Machine Automation, Hydro-Pneumatic tanks, Boiler Feed Water tanks, Oil Monitoring, Bilge Well application etc.



NIVELCO INSTRUMENTS INDIA PVT. LTD.

Malhar, Plot No. 18, S. No. 2,
Near Rajaram Bridge, Karve Nagar,
Pune - 411052 (India).
Phone : +91-20-25478313.
Fax : +91-20-25478313 Extn. 23.
India@nivelco.com; sales@nivelco.co.in

* Continuous improvement in the products may change the specifications without prior notice.